



Sahtu Land Use Planning Board

Box 235, Fort Good Hope, NT, X0E 0H0

Phone: (867) 598-2055 Fax: (867) 598-2545

Email: slupb@netkaster.ca Website: www.sahtulanduseplan.org

January 7, 2010

Wilbert Kochon, President
Ayoni Keh Land Corporation
P.O. Box 43
Colville Lake, NT X0E 1L0

Chief Richard Kochon
Behdzi Ahda' First Nation
P.O. Box 53
Colville Lake, NT X0E 1L0

Re: Meeting to Discuss SLUP Zone Changes in K'asho Got'ine District

Dear Sirs,

The Sahtu Land Use Planning Board is considering a number of zone changes in the K'asho Got'ine District as a result of community consultations and comments received on Draft 2. We would like to make you aware of the possible changes and seek your input on these before finalizing the zoning for Draft 3. We would be happy to schedule a community meeting in Colville Lake to discuss these changes with you. If you have no concerns with the proposed changes, you may respond in writing so we can proceed with plan revisions immediately.

- 1) In October the SLUPB attended a District meeting in Fort Good Hope at the request of Yamoga Land Corporation to resolve zoning issues between Fort Good Hope and Colville Lake. Unfortunately, Colville Lake representatives cancelled their participation at the last minute. The meeting went ahead and Fort Good Hope participants requested a number of zone changes. The first map attached shows the changes that the Board is prepared to accept for Draft 3. The proposed changes are shown with a dotted line and include:
 - Re-establishment of Special Management Zone (SMZ) around the Loon Lake to Anderson Trail from Draft 1
 - New SMZs with a 1 km buffer around rivers important to Fort Good Hope such as the Hare Indian River, Bluefish Creek, Snafu Creek, Sucker Creek, and Carcajou River
 - New SMZ for land north of the Ramparts Candidate Protected Area and west of the Mackenzie River
 - New Conservation Zones with a 500 m buffer to protect a number of lakes north of Fort Good Hope important to that community
 - Changing Lac a Jacques, Sam McRae, and Turton Lakes from SMZ to CZ.



The initial request to zone the Group Trapping Area as Special Management has been dropped by Fort Good Hope. Instead, they have identified the specific lakes and rivers they wish to provide additional protection for as described above.

- 2) The Deline Land Corporation informed the Board that they and Colville Lake representatives agreed during the SSI assembly to change Horton Lake to a Special Management Zone. Please confirm that this is your understanding as well.
- 3) The Protected Areas Strategy has completed an ecological representation analysis. They assessed how well the conservation zones protect important ecological areas and identify further areas that need protection. The results are shown in the second map that is attached. Areas shown in red are significant areas where further protection should be considered. Areas shown in green are also important for protection, but less critical than the red sites. Their analysis identifies lands in the Colville Lake area, which are recommending further conservation zones for. Would Colville Lake support either conservation or special management zones, to protect ecologically significant areas?
- 4) During our meeting with Colville Lake in January 2009, the community asked us to restrict water withdrawal for industrial purposes from Lac Belot. Participants at the meeting said the lake was shallow and was subject to rapid drawdown. The Board accepted this and restricted water withdrawal from Lac Belot in Draft 2. Fisheries and Oceans Canada (DFO) has told the Board that based on information they have, Lac Belot is quite deep and is better suited for water withdrawal than smaller lakes in the surrounding area. They have suggested that further surveys would have to be done before this type of restriction would be acceptable. You can find DFO's complete comments on our website at http://www.sahtulanduseplan.org/ftpfiles/public_comments/DFO_Dec%204-09.pdf .

The Board is considering deleting this restriction and replacing it with an action to have DFO conduct further surveys and work with Colville Lake to identify appropriate conditions for water use on Lac Belot. We would like to discuss this topic with you to determine if further information exists and assess the options for dealing with the community's concern.

If you have concerns about any of these topics, please contact me as soon as possible to arrange a meeting in Colville Lake to discuss these matters further. I would like to propose Thursday, January 28th for this meeting. Please be advised that the SLUPB does not pay honoraria for community meetings. Please respond next week to either confirm the meeting date, or to let us know that you have no concerns with the proposed changes. I can be reached at 403-984-3916 or Heidi.wiebe@shaw.ca.

Respectfully,

A handwritten signature in black ink, appearing to read "Heidi Wiebe".

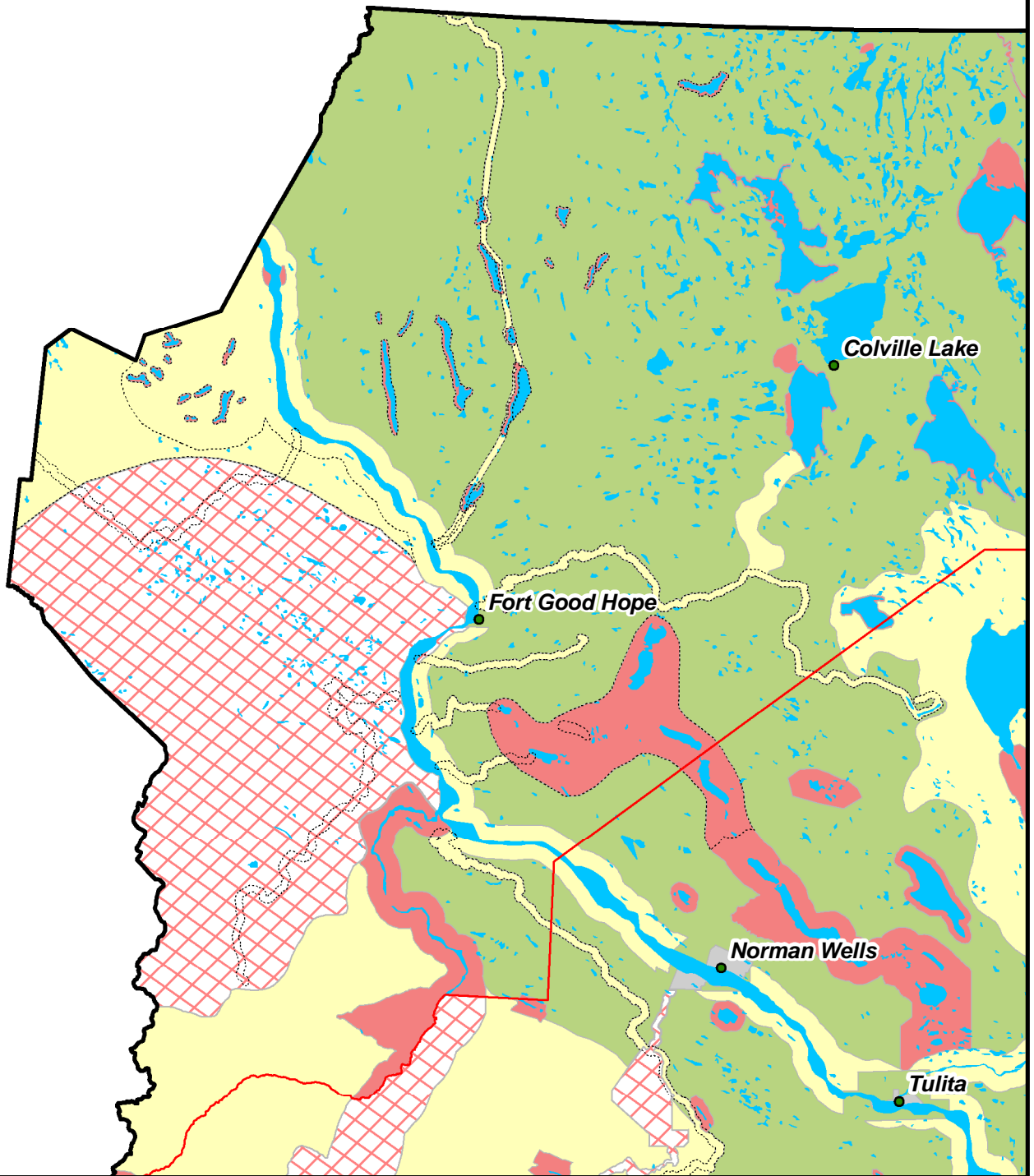
Heidi Wiebe
Plan Development Lead
Sahtu Land Use Planning Board

Attn: Map of proposed changes from Fort Good Hope meeting
Results of PAS Ecological Representation Analysis

Sahtu Land Use Plan

Fort Good Hope Proposed Changes

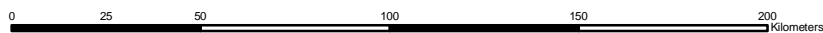
Jan 5, 2010



FGH Proposal Integrated into Zoning

- Zone Type**
- CZ
 - GUZ
 - MUNICIPAL
 - N_PARK
 - PCI
 - SMZ
- Fort Good Hope Proposed Change Areas

Projection: Lambert Conic
 Central Meridian -125
 Standard Parallels: 62, 68
 Base Data taken from 1:1 000 000
 National Atlas Data and 1:250 000 NTS Maps



DRAFT

Ecological Representation in Sahtu Ecoregions

This Map shows the one of the most efficient ways to get ecological representation in the ecoregions wholly or partially within the Sahtu Settlement Area. Existing protected areas, PAS proposals and approved and draft Land Use Plan conservation zones must be chosen for representation. This map shows which additional areas are most important for achieving ecological representation in Sahtu ecoregions.

Areas "locked in" or forced to be selected 100% of the time: Areas "locked out" (excluded from selection)

- National Parks/National Park Reserves
- Areas protected through Land Claim Agreements (Kelly Lake, Canol Heritage Trail, Ezydziti)
- PAS Proposals
- Sahtu Draft Conservation Zones
- Dehcho Draft Land Use Plan Conservation Zones
- Gwich'in Conservation and Heritage Conservation Zones

- Large water bodies
- 1 km wide proposed Mackenzie Gas Pipeline corridor
- Oil and gas leases (production licences, significant discovery licences - Jan. 2009)
- Active mineral leases (June 2009)

